

Value⁺ 24



Our Vision

To improve the quality of life with our advanced testing equipment.

Our Mission

Supplying advanced and reliable testing equipment at affordable prices to satisfy the needs of trade professionals and equipment users

Our objective

Promoting the use of advanced technologies in different walks of life.

Who we are?

Futronix is founded by a team of experienced equipment development engineers, software engineers and senior marketing executives.

Who do we serve?

Futronix equipment are designed for professionals and DIY users in:

- Laying and maintenance of electrical systems,
- Laying and maintaining of optical fibre systems,
- Environment (including the environmental figures such as temperature, magnetic field, health and safety),
- Field service and maintenance,
- Food manufacturing and processing,
- Distance Measurement,
- Drainage systems,
- Searching hidden meters.

Who do we offer?

We are specialized in manufacturing and producing various types of testing equipment, including :

- contact type thermometers,
- IR thermometers,
- non-contact human forehead thermometers,
- hygro-thermometers,
- digital food thermometers,
- voltage detectors,
- magnetic field detectors,
- wire trackers,
- optical power meters
- CCTV testers (including analogue, IP, AHD, TVI and CVI),
- PM2.5 meters
- formaldehyde monitors,
- distance meters,
- pipe locators,
- metal detectors,
- automotive battery testers, and
- digital multimeters.



Why choose Futronix?

Our products are designed for professional and DIY users. We are conversant with all the safety and environmental requirements for testing equipment.

Where are we?

Our headquarter is located in Hong Kong while our production plant is located in Jiāngxī, China. To ensure the quality of our products, the production line is monitored closely by our experienced engineers in Jiangxi.



CONTENT

Automotive Battery Testers	1
Battery Analyzers	2
Wire Trackers	3
Cable Length Meters	8
Optical Power Meters	10
Digital Multimeters	12
Non-contact Voltage Detectors	15
Camera Testers	17
Contact Type Thermometers	18
Forehead IR Thermometers	19
Infrared Thermometers	20
Environmental Testers	21
Formaldehyde Monitors	22
Pipe Locators / Metal Detectors	23
Accessories	24



Automotive Battery Testers

AB70A, AB70B

Value⁺



AB70A / AB70B

- User can get the battery parameters, such as voltage, internal resistance, cold cranking amp and AH capacity, battery health and charge status, by using ONE Equipment;
- Allow users to test batteries in-vehicle and out-of-vehicle, and even dead cells;
- Can test alternator's charging and starter's cranking conditions;
- Able to check 12V and 24V batteries.



Specifications

		AB70A	AB70B
Battery Type	12V / 24V	✓	✓
Battery Standard	STD / AGM / GEL / EFB / SAE	✓	✓
CCA Range	50 ~ 1999	✓	✓
EN Range	50 ~ 1999	✓	✓
IEC Range	50 ~ 1200	✓	✓
DIN Range	50 ~ 1200	✓	✓
Capacity Range	3AH ~ 250AH	±5%	±(5%)
Internal Resistance	2 ~ 200mΩ	±(5%+5)	±(5%+5)
Discharge Current	50 ~ 1999A	±(5%+5)	±(5%+5)
Battery Life	0 ~ 100%	✓	✓
Battery Level Detection	0 ~ 100%	✓	✓
Start Capability		✓	✓
Battery Quality		✓	✓
Lighting / Flashlight		✓	✓
Temperature Measurement	0 ~ 400°C '32 ~ 752°F		±(3%+3) ±(3%+3)
Car Starting Test		✓	✓
Car Charging Capability			✓
Car Load Measurement		✓	✓
Resistance measurement method	Four (4) terminal Kelvin connections	✓	✓
Display Mode		Color LCD	
Powered by	Type-C from the battery being tested	✓	✓



- Designed for test and measure a stationary battery system;
- Measure the battery internal resistance and voltages
- Can be used to determine the overall condition of battery system
- Measure electrical parameters for battery system maintenance
- Able to measure
 - Lead-acid batteries
 - Lithium batteries
 - Nickel-cadmium battery
 - Alkaline battery

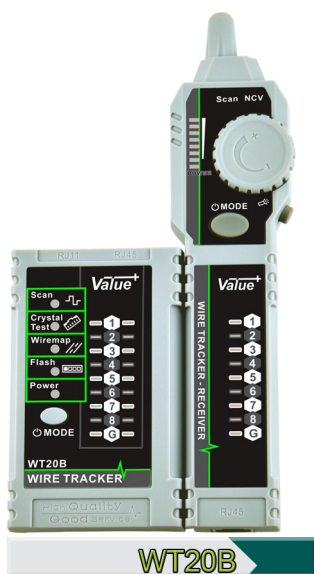


Specifications

		AB70C
Battery Internal Resistance	19.99mΩ/199.9mΩ/1.999Ω/19.99Ω/199.9Ω	±(0.8%+10)
Vdc	99.99V/109.9V	±(0.5%+5)
Vac Output	50mA/5mA/500mA/50mA	✓
Measuring Frequency	1kHz	✓
Auto / Manual Ranging		✓
Low Battery Indication		✓
Auto Power Off		✓
Display Backlight		✓
Flashlight		✓
Resistance measurement method	Four (4) terminal Kelvin connections	✓
Display Mode		Color LCD
Max Display		9999
Power By		3.7V Lithium Ion Battery



- With Crimping Crystal Test;
- Cable Checking (WT20B and WT20C);
- PoE Voltage Test;
- Port Blink Test;
- Able to check network cable (4P4C and 8P8C), phone line and coaxial line;
- With low power consumption;
- Auto Power Off to save battery power.



Specifications

	WT20A	WT20B	WT20C
Digitalized Cable Tracing		✓	✓
Tracing cables connected to ethernet hub with POE support		✓	✓
Signal Level indication		✓	✓
Port Blink Test	100W	✓	✓
	1000W		✓
Display POE Power Pinouts	✓	✓	✓
60V POE Hipot Protection	✓	✓	✓
Crimping Crystal Test	✓	✓	✓
Cable Testing			
Shorts	✓	✓	✓
Open	✓	✓	✓
Split pair	✓	✓	✓
NCV		✓	✓
Tracing signal transmission distance		3km	
Output signal level		~15Vp-p	
Vibration induction			✓
Flashlight		✓	✓
Signal Level Indication		✓	✓
Tracing Sensitivity Adjustable		✓	✓
NCV Sensitivity Adjustable		✓	✓
Low Battery Indication	✓	✓	✓
Auto Power Off	✓	✓	✓
Input Jack Indicators		✓	
Power by Transmitter :	9V (6F22)	✓	
	3.7V, 800mAH Lithium Ion Battery		✓
Receiver :	3.7V, 800mAH Lithium Ion Battery	✓	✓
Working Current	30~40mA		



WT52A / WT52C

- With Intuitive Operation by displaying all results on one screen;
- Network (RJ45) / Phone (RJ11) Cable Connection Test;
- Able to measure PoE and battery Voltage;
- All test results are displayed on the screen for easy reading;
- Able to test UTP and STP cables;
- Suitable for CAT 3, 4, 5, 5e, 6, 6A, 7, 7A, 8/8.1 and 8.2 cable;
- Identify / Trace the target wire among plenty of wires (suitable for network cable, phone line and coaxial line);
- Short-circuit, breaking circuit, open circuit and crossing checking;
- Auto scan mode rapidly test corresponding LAN cable connectivity (1,2,3,4,5,6,7,8) to judge wrong connection or short/open circuit;
- Tracing cables connected to ethernet hub with POE support;
- Have Remote Identification Function;
- Intelligent wiremap (Shorts, Split Pairs, and Breakpoint Checking);
- Audio and visual indication;
- Vibrating indication (WT52B and WT52D);
- With digitalized signal to minimize the noise;
- Sound level adjustable to suit for working in different environments;
- With Non-contact Voltage Detection;
- Bright white LED flashlight for dark environments;
- Auto Power Off to save battery power;
- Trendy Look;
- Help to increase users efficiency.

Specifications

	WT52A	WT52B	WT52C	WT52D
Analogue Cable Tracing	✓	✓	✓	✓
Digitalized Cable Tracing	✓	✓	✓	✓
Tracing cables connected to ethernet hub with POE support	✓	✓	✓	✓
Port Blink Test	✓	✓	✓	✓
Identify wire pairs and quality of wire connections	✓	✓	✓	✓
Voltage Measurement (via network cable jack for reference)	✓	✓	✓	✓
POE (Standard) Voltage Polarity Checking	✓	✓		
POE (Non Standard) Voltage Polarity Checking	✓	✓	✓	✓
POE (Standard) Voltage measurement (for reference only)	✓	✓		
POE (Non-standard) Voltage measurement (for reference only)	✓	✓	✓	✓
Crimping Crystal Test	✓	✓	✓	✓
Continuity (via network cable jack)	✓	✓	✓	✓
Intelligent Wiremap	✓	✓	✓	✓
Shorts	✓	✓	✓	✓
Split pair	✓	✓	✓	✓
Continuity Test	✓	✓	✓	✓
NCV	✓	✓	✓	✓
Analogue Bargraph	✓	✓	✓	✓
Tracing signal transmission distance	3km			
Output signal level	~15Vp-p			
Vibration induction		✓		✓
Flashlight (both main body & transmitter)	✓	✓	✓	✓
Loudness Adjustable	✓	✓	✓	✓
Sensitivity Adjustable	✓	✓	✓	✓
White Display Backlight	✓	✓	✓	✓
Low Battery Indication	✓	✓	✓	✓
Auto Power Off	✓	✓	✓	✓
Working on	✓	✓	✓	✓
Network Cable (8P8C, 4P4C), Phone Line and Coaxial Cable				
Cable Length Measurement			2-120m	2-500m
Length			0.1m	0.1m
Resolution			±(1%+2m)	±(1%+2m)
Best Accuracy			✓	✓
User Calibration				
Multimeter				
DC Voltage	400mV~250V	±(0.8%+3)		±(0.8%+3)
AC Voltage	4V~250V	±(1.5%+5)		±(1.5%+5)
DC Current	1A~10A	±(1.2%+4)		±(1.2%+4)
AC Current	1A~10A	±(2%+5)		±(2%+5)
Resistance	200Ω~20MΩ	±(2%+6)		±(2%+6)
Diode		✓		✓
Temperature	-20~1000°C	±(2%+15)		±(2%+15)
Input Jack Indicators		✓		✓
Power by	Transmitter :	3.7V, 1250mAH Rechargeable Lithium Battery		
	Receiver :	9V (6F22)		



WT52B / WT52D



WT22A

- With Intuitive Operation by displaying all results on one screen;
- Network (RJ45) / Phone (RJ11) Cable Connection Test;
- Able to measure PoE and battery Voltage;
- All test results are displayed on the screen for easy reading;
- Able to test UTP and STP cables;
- Suitable for CAT 3, 4, 5, 5e, 6, 6A, 7, 7A, 8/8.1 and 8.2 cable;
- Identify / Trace the target wire among plenty of wires (suitable for network cable, phone line and coaxial line);
- Short-circuit, breaking circuit, open circuit and crossing checking;
- Auto scan mode rapidly test corresponding LAN cable connectivity (1,2,3,4,5,6,7,8) to judge wrong connection or short/open circuit;
- Tracing cables connected to ethernet hub with POE support;
- Have Remote Identification Function;
- Intelligent wiremap (Shorts, Split Pairs, and Breakpoint Checking);
- Audio and visual indication;
- Vibrating indication (WT22P);
- With digitalized signal to minimize the noise;
- Sound level adjustable to suit for working in different environments;
- With Non-contact Voltage Detection;
- Bright white LED flashlight for dark environments;
- Auto Power Off to save battery power;
- Trendy Look;
- Help to increase users efficiency.



WT22A



WT22C



WT22D



WT22E

Specifications

	WT22A	WT22B	WT22C	WT22D	WT22E	WT22F
Analogue Cable Tracing	✓	✓	✓	✓	✓	✓
Digitalized Cable Tracing				✓	✓	✓
Tracing cables connected to ethernet hub with POE support				✓	✓	✓
Identify wire pairs and quality of wire connections	✓	✓	✓	✓	✓	✓
Voltage Polarity Checking		✓	✓	✓	✓	
Continuity Test		✓		✓	✓	
Tracing signal transmission distance	1km			3km		
Output signal level	~15Vp-p			~23Vp-p		
Vibration induction					✓	
Flashlight	✓	✓	✓	✓	✓	✓
Loudness Adjustable	✓	✓	✓	✓	✓	✓
Headset available (for working in noisy area)	✓	✓	✓	✓	✓	✓
Change of buzzer tone for identification of buzzer sound	✓	✓	✓	✓	✓	✓
Low Battery Indication (Transmitter)	✓	✓	✓	✓	✓	✓
Laser Beam (for visual identifying the optical fibre continuity)			~1km			
Auto Power Off (Transmitter)	✓	✓	✓	✓	✓	✓
Power by Transmitter :	1.5V (AA) x 3					
Receiver :						
	9V (6F22)					



WT22F



WT22N / WT22P

- With Intuitive Operation by displaying all results on one screen;
- Network (RJ45) / Phone (RJ11) Cable Connection Test;
- Able to measure PoE and battery Voltage;
- All test results are displayed on the screen for easy reading;
- Able to test UTP and STP cables;
- Suitable for CAT 3, 4, 5, 5e, 6, 6A, 7, 7A, 8/8.1 and 8.2 cable;
- Identify / Trace the target wire among plenty of wires (suitable for network cable, phone line and coaxial line);
- Short-circuit, breaking circuit, open circuit and crossing checking;
- Auto scan mode rapidly test corresponding LAN cable connectivity (1,2,3,4,5,6,7,8) to judge wrong connection or short/open circuit;
- Tracing cables connected to ethernet hub with PoE support;
- Have Remote Identification Function (WT22P);
- Intelligent wiremap (Shorts, Split Pairs, and Breakpoint Checking);
- Audio and visual indication;
- Vibrating indication (WT22P);
- With digitalized signal to minimize the noise;
- Sound level adjustable to suit for working in different environments;
- Bright white LED flashlight for dark environments;
- Auto Power Off to save battery power;
- Trendy Look;
- Help to increase users efficiency.

Specifications

	WT22N	WT22P
Analogue Cable Tracing	✓	✓
Digitalized Cable Tracing	✓	✓
Tracing cables connected to ethernet hub with POE support	✓	✓
Identify wire pairs and quality of wire connections	✓	✓
POE Voltage Polarity Checking	✓	✓
POE Voltage measurement (for reference only)	✓	✓
Battery Voltage Polarity Checking	✓	✓
Battery Voltage measurement (for reference only)	✓	✓
Intelligent Wiremap		
Shorts	✓	✓
Split pair	✓	✓
Breakpoint checking	✓	✓
Continuity Test	✓	✓
Tracing signal transmission distance	3km	
Output signal level	~15Vp-p	
Vibration induction		✓
Flashlight	✓	✓
Loudness Adjustable	✓	✓
Low Battery Indication (Transmitter)	✓	✓
Auto Power Off (Transmitter)	✓	✓
Working on Network Cable (8P8C, 4P4C), Phone Line and Coaxial Cable	✓	✓
Power by Transmitter :	1.5V (AA) x 3	
Receiver :	9V (6F22)	



WT25D / WT25E

- Design to check Lan Cables, Phone Lines and Coaxial Cables;
- Easy to use;
- Help to increase users efficiency;
- Help to determine where a cable is and whether the cable is broken or not;
- Identify a cable from a bundle of cables;
- By using digitalized signal to increase the accuracy;
- Tracing cables connected to ethernet hub with PoE support;
- Suitable for CAT 3, 4, 5, 5e, 6, 6A, 7, 7A, 8/8.1 and 8.2 cable;
- Trendy look;
- Buzzer tone is changeable;
- Buzzer loudness adjustable;
- Flashlight for working in dark environments;
- Receiver can be stored in the transmitter for tidy up the tools and for easy carrying.



Receiver stored in the transmitter



WT25C

Specifications

	WT25C	WT25D	WT25E
Analogue Cable Tracing	✓	✓	✓
Digitalized Cable Tracing	✓	✓	✓
Tracing cables connected to ethernet hub with POE support	✓	✓	✓
Checking the correctness and quality of wire connections	✓	✓	✓
Voltage Polarity Checking	✓	✓	✓
Continuity Test	✓	✓	✓
Tracing signal transmission distance		3Km	3Km
Output signal level		~23Vp-p	~23Vp-p
Vibration indication			✓
Flashlight	✓	✓	✓
Adjustable loudness of buzzer	✓	✓	✓
Change of buzzer tone for identification of buzzer sound	✓	✓	✓
Low battery indication	✓	✓	✓
Auto power off	✓	✓	✓
Powered by	Transmitter: 1.5V (AA) x3 Receiver: 9V (6F22) x1		

Cable Length Meters

WT26 series

Value+



WT26E / WT26G

- No Calibration is needed for general measurement;
- Allow User Calibration for precise measurement;
- Able to measure cable made of different material;
- Only need to connect the cable at one side;
- Measure up to 400 meters;
- Able to measure LAN cable (both 4P4C & 8P8C), Phone wire and BNC cable;
- Intelligent wiremap Shorts, Split Pairs, and Breakpoint Checking);
- Tracing cables connected to ethernet hub with PoE support;
- Have Remote Identification Function (Optional);
- Auto power off;
- With display backlight and flashlight;
- Sensitivity adjustable;
- With Red Visible Laser (WT26F).



Specifications

		WT26E	WT26F	WT26G
Cable Length Measurement				
2-100m	Resolution	0.1m		
	Best Accuracy	±(1%+5m)		
2-400m	Resolution		0.1m	0.1m
	Best Accuracy		±(1%+5m)	±(1%+5m)
Intelligent Wiremap				
Shorts		✓	✓	✓
Split pair		✓	✓	✓
Breakpoint checking		✓	✓	✓
Length of Network Cable	(8P8C)	✓	✓	✓
Length of Network Cable	(4P4C)	✓	✓	✓
Length of Phone Cable		✓	✓	✓
Length of BNC Cable		✓	✓	✓
Analogue Cable Tracing		✓	✓	✓
Digitalized Cable Tracing		✓	✓	✓
Port Blink Test		✓	✓	✓
Voltage Measurement (via network cable jack for reference)		✓	✓	✓
POE (Standard) Voltage Polarity Checking			✓	✓
POE (Non Standard) Voltage Polarity Checking		✓	✓	✓
POE (Standard) Voltage measurement (for reference only)			✓	✓
POE (Non-standard) Voltage measurement (for reference only)		✓	✓	✓
Continuity (via network cable jack)		✓	✓	✓
Vibration induction				✓
PoE Voltage Protection		✓	✓	✓
Remote Identification (Optional)		7	7	7
User Calibratable		✓	✓	✓
User Calibration Result Storage		✓	✓	✓
Red Visible Laser			✓	
Max Display		9999	9999	9999
User Calibratable		✓	✓	✓
User Calibration Result Storage		✓	✓	✓
Display Backlight		✓	✓	✓
Flashlight		✓	✓	✓
Sensitivity adjustable		✓	✓	✓
Low power indication		✓	✓	✓
Auto power off		✓	✓	✓
Power By : Transmitter		3.7V 1360mAH Li-ion Battery x1		
Receiver		9V 6F22 Battery x1		



WT26F

Cable Length Meters w/ DMM

WT36 series

Value+



WT36D / WT36E

- No Calibration is needed for general measurement;
- Allow User Calibration for precise measurement;
- Able to measure cable made of different material;
- Only need to connect the cable at one side;
- Measure up to 600 meters;
- Able to measure LAN cable (both 4P4C & 8P8C), Phone wire and BNC cable;
- Intelligent wiremap Shorts, Split Pairs, and Breakpoint Checking);
- Tracing cables connected to ethernet hub with PoE support;
- Have Remote Identification Function (Optional);
- Auto power off;
- With display backlight and flashlight;
- Sensitivity adjustable;
- With Built-in Multimeter Functions.



Specifications

		WT36D	WT36E
Cable Length Measurement			
2-400m	Resolution	0.1m	
	Best Accuracy	±(1%+5)	
2-600m	Resolution		0.1m
	Best Accuracy		±(1%+5)
Intelligent Wiremap			
Shorts		✓	✓
Split pair		✓	✓
Breakpoint checking		✓	✓
Length of Network Cable	(8P8C)	✓	✓
Length of Network Cable	(4P4C)	✓	✓
Length of Phone Cable		✓	✓
Length of BNC Cable		✓	✓
Analogue Cable Tracing		✓	✓
Digitalized Cable Tracing			✓
Port Blink Test		✓	✓
Voltage Measurement (via network cable jack for reference)		✓	✓
PoE Voltage Polarity Checking		✓	✓
POE Voltage measurement (for reference only)		✓	✓
Continuity (via network cable jack)		✓	✓
PoE Voltage Protection		✓	✓
Vibration induction			✓
Remote Identification (Optional)		7	7
User Calibratable		✓	✓
User Calibration Result Storage		✓	✓
Multimeter			
DC Voltage	400mV-600V	±(0.8%+3)	±(0.8%+3)
AC Voltage	4V-400V	±(1.5%+5)	±(1.5%+5)
DC Current	1A-10A	±(1.2%+4)	±(1.2%+4)
AC Current	1A-10A	±(2%+5)	±(2%+5)
Resistance	200Ω-20MΩ	±(2%+6)	±(2%+6)
Diode		✓	✓
Continuity		✓	✓
Temperature		±(2%+15)	±(2%+15)
Max Display		9999	9999
Display Backlight		✓	✓
Flashlight		✓	✓
Sensitivity adjustable		✓	✓
Low power indication		✓	✓
Auto power off		✓	✓
Power By	Main Body:	3.7V, 1250mAH Lithium Ion Battery	
	Receiver:		
		9V (6F22)	

Optical Power Meters

VT22D, VT22E, VT22F, VT23D, VT23E, VT23F

Value+



VT22D / VT23D

- Inspect optical fibre capabilities;
- Able to calculate relative power loss;
- Locate the fault and trouble shooting;
- Linear indicators (mW) and non-linear indicators (dBm) display in one screen;
- Large display for easy reading;
- Able to connect to SC, FC and ST type plug (with optional adaptors);
- High Performance Meter for precise measurement;
- With Visible Laser Beam, to have visual fault checking of optical fibre (VT22E, VT22F, VT23E and VT23F);
- Compact and Trendy Look;
- Easy to Use and Carry;
- Auto Power Off to save battery power;
- Eco Friendly by using Rechargeable Batteries (VT23D, VT23E and VT23F)



VT22E / VT22F

VT23E / VT23F



Specifications

	VT22D	VT22E	VT22F	VT23D	VT23E	VT23F
Wavelength (nm)	850, 980, 1300, 1310, 1490, 1550, 1620					
Detector type	InGaAs					
Power measurement range	-70 ~ 6 dBm					
Power measurement accuracy	±0.3 (5%)					
Resolution	0.01					
Optical output connector	2.5mm ST, SC, FC					
Red visible laser		✓	✓		✓	✓
Laser output		>10mW	>1mW		>10mW	>1mW
Low battery display	✓	✓	✓	✓	✓	✓
Auto power off	✓	✓	✓	✓	✓	✓
Powered by	1.5V (AA) x3			3.7V Rechargeable Battery (14500) x3		



VT24D

VT24E / VT24F

- Inspect optical fibre capabilities;
- Able to calculate relative power loss;
- Linear indicators (mW) and non-linear indicators (dBm) display in one screen;
- Large display for easy reading;
- Able to connect to SC, FC and ST type plug (with optional adaptors);
- With Visible Laser Beam, to have visual fault checking of optical fibre (VT24E and VT24F);
- Network (RJ45) / Phone (RJ11) Cable Connection Test.;
- Identify / Trace the target wire among plenty of wires;
- Trace wire in unpowered electrical system;
- Auto scan mode rapidly test corresponding LAN cable connectivity (1,2,3,4,5,6,7,8) to judge wrong connection or short/open circuit;
- Tracing cables connected to ethernet hub with POE support;
- Sound level adjustable to suit for working in different environments;
- Bright white LED flashlight for dark environments;
- Auto Power Off to save battery power;
- Eco Friendly by using Rechargeable Batteries;
- Easy to use;
- Help to increase users efficiency.

Specifications

	VT24D	VT24E	VT24F
Wavelength (nm)	850, 980, 1300, 1310, 1490, 1550, 1620		
Detector type	InGaAs		
Power measurement range	-70 ~ 6 dBm		
Power measurement accuracy	±0.3 (5%)		
Resolution	0.01		
Optical output connector	2.5mm ST, SC, FC		
Red visible laser		✓	✓
Laser output		>10mW	>1mW
Tracing network or phone cable in bundle of wires	✓	✓	✓
Checking the correctness and quantity of wire connections	✓	✓	✓
Low battery display	✓	✓	✓
Auto power off	✓	✓	✓
Powered by	3.7V Rechargeable Battery (14500) x3		
Transmitter:			
Receiver:	9V (6F22) x1		



MM62A / MM62B

- Input Jack indicators;
- Display Backlight;
- Auto power off;
- Low battery indication;
- Auto range;
- k-type temperature measurement (MM62B);
- Non-contact Voltage Detection;
- Live wire checking;
- Installed with anti-burn fuse.



Specifications

		MM62A	MM62B
DC Voltage	600mV/6V/60V/250V	±(0.8%+5)	±(0.8%+5)
AC Voltage	600mV/6V/60V/250V	±(1.5%+5)	±(1.5%+5)
DC Current	600μA/60mA/600mA/10A	±(1%+5)	±(1%+5)
AC Current	60mA/600mA/10A	±(1.5%+5)	±(1.5%+5)
Resistance	600Ω/6kΩ/60kΩ/600kΩ/6MΩ/60MΩ	±(0.8%+3)	±(0.8%+3)
Temperature	-20~400°C		±(3%+15)
Frequency	10Hz/100Hz/1kHz/10kHz/100kHz/1MHz/10MHz	±(1.5%+5)	±(1.5%+5)
Capacitance	6nF/60nF/600nF/6mF/60mF/600mF/6mF/60mF	±(4%+5)	±(4%+5)
Live		✓	✓
NCV		✓	✓
Auto Ranging		✓	✓
Diode		✓	✓
Continuity Buzzer		✓	✓
Data Hold		✓	✓
Low Battery Indication		✓	✓
Auto Power Off		✓	✓
Display Mode		Twisted Nematic	
Display Backlight		✓	✓
Flashlight		✓	✓
Max Display		5999	5999
Power By		1.5V AA x2	14500 Lithium Ion Rechargeable Battery
USB Charging			✓



MM65E

- True RMS;
- REL mode;
- Input Jack indicators;
- Display Backlight;
- Auto power off;
- Low battery indication;
- Auto range (MM65E);
- Auto and manual ranges selectable (MM65E);
- k-type temperature measurement (MM65C and MM65E);
- Non-contact Voltage Detection;
- Live wire checking;
- Battery test (MM65B and MM65C);
- CAT III 1000V / CAT IV 600V.



MM65B



MM65C

Specifications

		MM65B	MM65C	MM65E
DC Voltage	200mV/2V/20V/200V/1000V 600mV/6V/60V/600V/1000V	$\pm(0.5\%+3)$	$\pm(0.5\%+3)$	$\pm(0.5\%+5)$
AC Voltage	2V/20V/200V/750V 600mV/6V/60V/600V/1000V	$\pm(0.8\%+5)$	$\pm(0.8\%+5)$	$\pm(1.2\%+5)$
DC Current	200 μ A/20mA/200mA/10A 600 μ A/6000 μ A/60mA/600mA/10A	$\pm(0.8\%+3)$	$\pm(0.8\%+3)$	$\pm(1.2\%+5)$
AC Current	20mA/200mA/10A 600 μ A/6000 μ A/60mA/600mA/10A	$\pm(2\%+5)$	$\pm(2\%+5)$	$\pm(1.5\%+5)$
Resistance	200 Ω /2k Ω /20k Ω /200k Ω /2M Ω /20M Ω 600 Ω /6k Ω /60k Ω /600k Ω /6M Ω /60M Ω	$\pm(0.8\%+3)$	$\pm(0.8\%+3)$	$\pm(0.8\%+5)$
Temperature	-20~1000°C 0~1832°F		$\pm(1\%+4)$ $\pm(1\%+5)$	$\pm(1\%+3)$ $\pm(1\%+5)$
Frequency	10Hz/100Hz/1kHz/10kHz/100kHz/1MHz/10MHz			$\pm(1.5\%+5)$
Capacitance	20nF/200nF/2mF/20mF/200mF/2mF/20mF 6nF/60nF/ 600nF/6mF/60mF/600mF/6mF/60mF	$\pm(5\%+5)$	$\pm(5\%+5)$	$\pm(4\%+5)$
Live		✓	✓	✓
NCV		✓	✓	✓
Auto Ranging				✓
Battery Test	1.5V/9V	✓	✓	
Diode			✓	✓
Continuity Buzzer		✓	✓	✓
True RMS		✓	✓	✓
Data Hold		✓	✓	✓
Auto Power Off		✓	✓	✓
Display Mode		Twisted Nematic		
Display Backlight		✓	✓	✓
Max Display		1999	1999	5999
Power By		1.5V (R6) x 2		



MM66E

- True RMS;
- REL mode;
- Input Jack indicators;
- Display Backlight;
- Auto power off;
- Low battery indication;
- Auto range (MM66E);
- Auto and manual ranges selectable (MM66E);
- k-type temperature measurement (MM66C and MM66E);
- Non-contact Voltage Detection;
- Live wire checking;
- Battery test (MM66B and MM66C);
- CAT III 1000V / CAT IV 600V;
- Eco-friendly (no disposable batteries are needed);
- With inductive charging which is safe and convenience;
- Using Vertical Alignment Display allows:
 - larger viewing angles;
 - faster response;
 - sharper contrast;
 - easier read under strong light.

With inductive (without any metallic contact) charger for
safe and easy charging



MM66B



MM66C

Specifications

		MM66B	MM66C	MM66E
DC Voltage	200mV/2V/20V/200V/1000V 600mV/6V/60V/600V/1000V	±(0.5%+3)	±(0.5%+3)	±(0.5%+5)
AC Voltage	2V/20V/200V/750V 600mV/6V/60V/600V/1000V	±(0.8%+5)	±(0.8%+5)	±(1.2%+5)
DC Current	200μA/20mA/200mA/10A 600μA/6000μA/60mA/600mA/10A	±(0.8%+3)	±(0.8%+3)	±(1.2%+5)
AC Current	20mA/200mA/10A 600μA/6000μA/60mA/600mA/10A	±(2%+5)	±(2%+5)	±(1.5%+5)
Resistance	200Ω/2kΩ/20kΩ/200kΩ/2MΩ/20MΩ 600Ω/6kΩ/60kΩ/600kΩ/6MΩ/60MΩ	±(0.8%+3)	±(0.8%+3)	±(0.8%+5)
Temperature	-20~1000°C 0~1832°F		±(1%+4) ±(1%+5)	±(1%+3) ±(1%+5)
Frequency	10Hz/100Hz/1kHz/10kHz/100kHz/1MHz/10MHz			±(1.5%+5)
Capacitance	20nF/200nF/2mF/20mF/200mF/2mF/20mF 6nF/60nF/ 600nF/6mF/60mF/600mF/6mF/60mF	±(5%+5)	±(5%+5)	±(4%+5)
Live		✓	✓	✓
NCV		✓	✓	✓
Auto Ranging				✓
Battery Test	1.5V/9V	✓	✓	
Diode			✓	✓
Continuity Buzzer		✓	✓	✓
True RMS		✓	✓	✓
Data Hold		✓	✓	✓
Auto Power Off		✓	✓	✓
Display Mode		Vertical Alignment		
Display Backlight		✓	✓	✓
Max Display		1999	1999	5999
Power By		3.7V (14500) x 1		
Inductive Charging		✓	✓	✓

Non-contact Voltage Detectors

NF11 series

Value⁺



NF11A / NF11B

NF11C

- Safe (Detects voltage without contact);
- Easy to use;
- Available with different indicating methods (flashing, sound and vibration);
- Measuring from 90V to 1000V (CAT IV), suitable for a wide range of residential, commercial and industrial needs;
- Built-in white torch at the front end for helping to search the testing point in dark (some models);
- Integrated clip design, optimized for pocket storage;
- Nice sharp;
- Auto Power off to enhance the battery life.



NF11F

Specifications

	NF11A	NF11B	NF11C	NF11F
AC Voltage	90-1000V	90-1000V	90-1000V	90-1000V
Frequency	40-400Hz	40-400Hz	40-400Hz	40-400Hz
Indicated by				
LED Flashing	✓	✓	✓	✓
Beep Sound (Non-Switchable)		✓		
Beep Sound (Switchable)			✓	✓
Vibrating (Switchable)				✓
On / Off Button		✓	✓	✓
Switch on Indication		✓	✓	✓
Auto / Manual Detection Select		✓	✓	✓
Standby Indication	✓	✓	✓	✓
Flashlight		✓		✓
Low Battery Indicator	✓	✓	✓	✓
Auto Power Off	✓	✓	✓	✓
Overload Protection	CAT IV 1000V			
Power by	1.5V (AAA) x 2			

Non-contact Voltage Detectors

NF12, NF13 series

Value+



NF13B

- 5 segments bargraph indicators for easy interpretation;
- With audio indication; Measuring from 90V to 1000V (CAT IV);
- Suitable for a wide range of residential;
- Built-in white torch at front end for helping to search the testing point in dark;
- Integrated clip design;
- Optimized for pocket storage;
- Auto power off;
- Safe and easy to use.

Specifications

	NF13A	NF13B
AC Voltage	42-1000V	42-1000V
Frequency	50-400Hz	50-400Hz
Indicated by		
LED Flashing (5 Segments)	✓	
LCD Indicating (5 Segments)		✓
Beep Sound (Switchable)	✓	✓
On / Off Button	✓	✓
Switch on Indication	✓	✓
Standby Indication	✓	✓
Flashlight	✓	✓
Low Battery Indicator	✓	✓
Auto Power Off	✓	✓
Overload Protection	CAT IV 1000V	
Power by	1.5V (AAA) x 2	



NF13A

- Multi-propose detector for voltage detection and magnetic field detection;
- Detect the presence and polarity (North & South pole) of magnetic fields;
- Detect the presence of AC voltage from 90V to 1000V suitable for a wide range of residential, commercial and industrial needs;
- Non-contact voltage detection which is safe to user;
- Built-in white torch at the front end for helping to search the testing point in dark;
- With selectable sound / vibration for using in different environment (NF12D);
- Have auto power off to enhance the battery life
- CAT IV 1000V.

Specifications

	NF12A	NF12D
AC Voltage	90-1000V	90-1000V
Frequency	40-400Hz	40-400Hz
Sensitivity	20mm @ 240VAC	20mm @ 240VAC
Indicated by		
LED Flashing	✓	✓
Beep Sound (Switchable)		✓
Vibrating (Switchable)		✓
On / Off Button	✓	✓
Switch on Indication	✓	✓
Standby Indication	✓	✓
Flashlight		✓
Low Battery Indicator	✓	✓
Auto Power Off	✓	✓
Overload Protection	CAT IV 1000V	
Magnetic Field Detectors		
Sensitivity	±10mT	±10mT
Detection Area	10mm	10mm
Indicated by		
South / North Pole Indicator (by green / yellow LED)	✓	✓
Beep Sound (present of Magnetic Field)		✓
Power by	1.5V (AAA) x 2	



NF12A / NF12D



VM32T / VM32U

- Able to test Analogue, AHD, TVI, CVI and IP camera;
- PTZ Control and Scan available;
- Get IP Camera address and control;
- Monitoring RS-485 signals;
- Available with color bar output to check the monitors that the users can bring fewer instruments;
- Various power output selections help users to work in the environment which do not have power supply;
- Available with some additional functions;
- Builtin flashlight can help users to work in dark environments.



VM32Q

Specifications

	VM32Q	VM32T	VM32U
Display			
Type	TFT		
Size	3.5"		
Resolution	960(H) x 240(W)		
Power Output (DC12V 2A)	✓	✓	✓
Power Bank (DC5V 1A)	✓	✓	✓
Video Signal Input			
Type	NTSC / PAL		
Automatically identifying	✓	✓	✓
OSD Menu	✓	✓	✓
PTZ Control	✓	✓	
PTZ Address Scanning	✓	✓	
PTZ Address Preset	✓	✓	
RS-485 Signal Monitoring	✓	✓	✓
Color Bar Output	✓	✓	✓
UTP Cable Test	✓	✓	✓
IP Camera Address Scan	✓		✓
IP Camera Test	✓		✓
AHD	✓	✓	
Resolution Support (720p/1080p)	✓	✓	
Frame Rate Support (25/30/50/60 fps)	✓	✓	
TVI	✓	✓	
Resolution Support (720p/1080p)	✓	✓	
Frame Rate Support (25/30/50/60 fps)	✓	✓	
CVI	✓	✓	
Resolution Support (720p/1080p)	✓	✓	
Frame Rate Support (25/30/50/60 fps)	✓	✓	
Tracking network or TV cable in bundle of wires	✓		
Checking the correctness and quality of wire connections	✓		
Tracking signal transmission distance	1km		
Low Voltage Indicator	✓	✓	✓
Charging Indicator	✓	✓	✓
Charging Protection	✓	✓	✓
Sound on/off selectable (Volume adjustment)	✓	✓	✓
Phone cable tracing	✓		
Flashlight	✓	✓	✓
Auto Power Off	✓	✓	✓
Transmitter Powered By :			
3.7V 1800mA.h 18650 Li-ion Battery x3	✓	✓	✓
Receiver Powered By 9V (6F22) x1	✓		



Contact Type Thermometers

VT55 series

Value⁺



VT55A / VT55B

- Large Display shows :
 - T1, T2 together (VT55A); and
 - T1, T2, T3, T4 together (VT55B);
- Electronic offset function allows compensation of thermocouple errors to maximise overall accuracy;
- Measures J, K, T, E, R, S and N type thermocouples;
- Readout in °C, °F or Kelvin (K);
- Data logging up to 5000 records (VT55B) or 100 records (VT55A);
- With Hi / Lo Alarm to keep inform user when Hi or Low temperature is recorded;
- User friendly front panel is easy to set up and operate
- Auto Power Off to increase battery life.

Specifications

			VT55A	VT55B
No of Input			2	4
Temperature	Type K	-200°C ~ 1300°C -328°F ~ 2372°F	±(2%+2°C) ±(2%+4°F)	±(1%+1°C) ±(1%+2°F)
	Type J	-200°C ~ 1200°C -346°F ~ 2192°F	±(2%+2°C) ±(2%+4°F)	±(1%+1°C) ±(1%+2°F)
	Type T	-200°C ~ 400°C -346°F ~ 752°F	±(2%+2°C) ±(2%+4°F)	±(1%+1°C) ±(1%+2°F)
	Type E	-150°C ~ 1000°C -238°F ~ 1832°F	±(2%+2°C) ±(2%+4°F)	±(1%+1°C) ±(1%+2°F)
	Type R	0°C ~ 1760°C 32°F ~ 3200°F	±(2%+2°C) ±(2%+4°F)	±(1%+1°C) ±(1%+2°F)
	Type S	0°C ~ 1760°C 32°F ~ 3200°F	±(2%+2°C) ±(2%+4°F)	±(1%+1°C) ±(1%+2°F)
	Type N	-200°C ~ 1300°C -328°F ~ 2372°F	±(2%+2°C) ±(2%+4°F)	±(1%+1°C) ±(1%+2°F)
Resolution		≤999.9	0.1	0.1
		>999.9	1	1
°C/°F/K Selection			✓	✓
Max Mode			✓	✓
Min Mode			✓	✓
AVG Mode			✓	✓
T2-T1			✓	✓
T4-T3				✓
Hi/Low Alarm				✓
Data Hold			✓	✓
Data Lodding			100	5000
Probe Temp Compensation			✓	✓
Auto Calibration			✓	✓
Blue Tooth Interface				✓
Backlight Flashing Alarm			✓	✓
Auto Power Off			✓	✓
Display Backlight			✓	✓
Display Mode			Color LCD	
Max Display			9999	9999
Power By			1250mAH Lithium Battery	

Forehead IR Thermometers

HT11 series

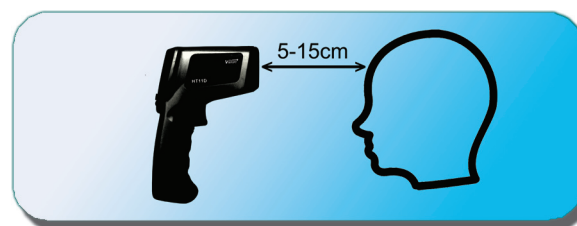
Value⁺



HT11A / HT11D

HT11E

- Screen out the person who has a fever;
- Fast and easy measurement;
- Best Accuracy up to 0.2°C;
- Response time : 500ms;
- °C / °F selectable;
- Max / Min record;
- Fever alarm (HT11E only);
- With display backlight;
- Auto power off.



Specifications

	HT11A	HT11D	HT11E
Body Temperature Range	32°C - 42.5°C 89.6°F - 108.5°F	32°C - 42.5°C 89.6°F - 108.5°F	32°C - 42.5°C 89.6°F - 108.5°F
Surface Temperature Range	0°C - 60°C -32°F - 140°F	0°C - 60°C -32°F - 140°F	0°C - 60°C -32°F - 140°F
Best Accuracy	±0.4°C or ±0.7°F	±0.2°C or ±0.4°F	±0.2°C or ±0.4°F
Display Resolution	0.1		
Distance	5 - 15cm		
Response Time (95% reading)	500ms		
Display Hold	7 seconds		
°C / °F Selection	✓	✓	✓
Temperature Data Hold	✓	✓	✓
Audible Indication			✓
Display Backlight		✓	✓
Sleep Mode		✓	✓
Power By	9V (6F22) x 1		



VT10C

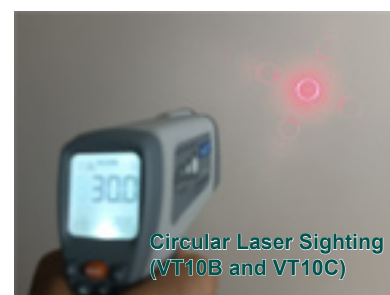
- Adjustable emissivity (from 0.10 to 0.95);
- Wide Range (largest range from -50°C to 1350°C / -58°F to 2462°F);
- Min / Max / Alarm;
- Able to store 20 measured values (for VT10B and VT10C);
- Able to measure room temperature;
- With Circular Laser Pointer (for VT10B and VT10C);
- White Backlight With 5 buttons for easy and fast operate;
- With Sleep mode to enhance battery life.



VT10A



VT10B



Circular Laser Sighting
(VT10B and VT10C)

Specifications

	VT10A	VT10B	VT10C
Temperature Range	-50°C - 550°C -58°F - 1022°F	-50°C - 850°C -58°F - 1562°F	-50°C - 1350°C -58°F - 2462°F
Best Accuracy	±1.5%, ±1.5°C or ±1.5°F		
Repeatability	±0.5%, ±0.5°C or ±1°F		
Display Resolution	0.1		
Distance to Spot Size Ratio	12:1	12:1	30:1
Response Time (95% reading)	500ms		
Spectral Response	8mm - 14mm		
Laser Power	Class 2 (II) operation; Output < 1mW, wavelength 630-670nm		
Laser Switch	✓	✓	✓
Laser Sighting	Single Point	Circular	Circular
Display Hold	7 seconds		
Emissivity	0.10 to 0.95		
°C / °F Selection	✓	✓	✓
Temperature Data Hold	✓	✓	✓
Data Logging		20	20
Search	✓	✓	✓
MAX / MIN / Room Temperature	✓	✓	✓
Hi / Lo alarm		✓	✓
Display Backlight	✓	✓	✓
Sleep Mode	✓	✓	✓
Power By	9V (6F22) x 1		



Hygrothermometer

- Precise;
- Able to monitor indoor temperature and humidity;
- Suitable for Home and Industrial Users;
- Celsius and Fahrenheit Selectable;
- Build-in Clock and Calendar;
- Comfortability Display;
- With Min/Max Display;
- With Alarm;
- Easy to operate.

Specifications

VT21A	
Temperature Range	0°C ~ 60°C
Best Accuracy	±1.5°C
Display Resolution	0.1
Humidity Range	20% ~ 90% RH
Best Accuracy	±5% @ 23°C
Display Resolution	1%
°C / °F Selection	✓
Time	✓
Calendar	✓
Comfortability	✓
Min / Max	✓
Alarm	✓
Power By	1.5V (AAA) x1



PM_{2.5} Meter

- Precise;
- Able to monitor indoor temperature and humidity;
- Suitable for Home and Industrial Users;
- Celsius and Fahrenheit Selectable;
- Build-in Clock and Calendar;
- Comfortability Display;
- With Min/Max Display;
- With Alarm;
- Easy to operate.

Specifications

VT50A	
PM _{2.5}	0-999µg/m
Detection Technology	Dynamic Light Scattering
Response Time	3s
Auto Power Off	✓
Power by	3.7V Lithium Battery (450mAh)

Formaldehyde Monitors

VT22H, VT22J, VT22K

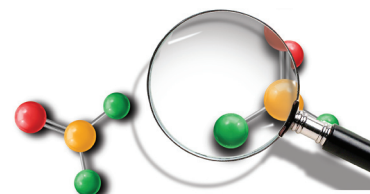
Value⁺



VT22H / VT22J

VT22K

- Employ the latest technologies to ensure the accuracy;
- Easy to use;
- Nice shape;
- For continuous monitoring formaldehyde level, especially after redeclaration and / or installing new furniture;
- Suitable for household use;
- Large display for easy reading;
- With Display Backlight for working in dark environments;
- Available for hanging on wall;
- Available with Temperature and Humidity Measurement for fully monitoring the environment;
- Unit (mg / ppm) selectable.



Specifications

	VT22H	VT22J	VT22K
Formaldehyde Measurement			
Range	0-5mg/m3	0-5mg/m3	0-5mg/m3
Resolution	0.01mg/m3	0.01mg/m3	0.01mg/m3
Accuracy	±5%	±5%	±5%
Temperature Measurement			
Range	0°C-50°C	-10°C-99°C	-10°C-99°C
Accuracy	±1°C	±0.5°C	±0.5°C
Humidity Measurement			
Range		0%-100%RH	0%-100%RH
Accuracy		±4.5%	±3%
°C / °F Selection	✓	✓	✓
Measurement Unit (mg / ppm) Selectable	✓	✓	✓
Repeatability	1% of signal		
Display Backlight	✓	✓	✓
Low Battery Indicator	✓	✓	✓
Auto Power Off	✓	✓	✓
Power by	1.5V (AAA) x 2		

Pipe Locators / Metal Detectors

PL33 series / MD28 series

Value+



PL33C / PL33D

PL33E / PL33F

- Locating the pipe / drain blocking position;
- Tracing the hidden pipe / drain route;
- Able to identify the designated pipe / drain;
- Able to trace both PVC, metallic and concrete pipe / drain;
- Adjustable sensitive to fit for different environments;
- Compact size for easy carrying;
- Cost effective equipment for pipe / drain locating;
- Indicating by sound or vibration;
- Autopower off to enhance the batteries life.

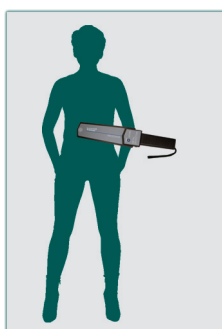
Specifications

	PL33C	PL33D	PL33E	PL33F
Scan PVC / concrete pipe	✓	✓	✓	✓
Scan metallic pipe	✓	✓	✓	✓
Transmission signal adjustable	✓	✓	✓	✓
Transmission cable length	20m			
Scanning indicator				
Sound	✓	✓	✓	✓
Vibration			✓	✓
Auto power off	✓	✓	✓	✓
Flashlight	✓	✓	✓	✓
Adjustable sensitivity	✓	✓	✓	✓
Low battery indicator (Transmitter)	✓	✓	✓	✓
Powered by (Transmitter)				
9V (6F22) x41	✓		✓	
3.7V 1800mAh Li-ion Rechargeable x1		✓		✓
Powered by (Receiver)	9V (6F22) x1			



MD28A / MD28B

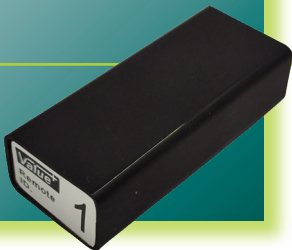
- To detect metals, weapons and metallic objects;
- For security screening;
- To search for discard or lost;
- Screening the metallic contaminant during production;
- For Beachcombing;
- High sensitivity
- Able to detect tiny metal pieces
- With sound, LED and vibrating indicator
- With low battery indicator.



Specifications

	MD28A	MD28B
Indicators		
Audio Alarm	✓	✓
LED	✓	✓
Vibrating		✓
Operating Frequency	22kHz	22kHz
Power Consumption	270mW	270mW
Low Battery Indicator	✓	✓
Power by	9V (6F22) x1	

Remote ID Unit
for Cable Length Meter



Inductive Charger



Carrying Bag VM



Testleads



Carrying Bag WT



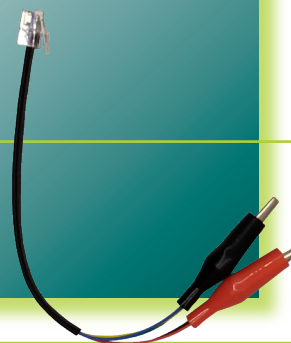
k-type Temperature Probe



Carrying Bag VT



Alligator Clip for
wire tracing



Futronix Co.
Hong Kong
www.futronix-hk.com
info@futronix-hk.com



All information provided are subject to change without prior notice

Your Distributor: